

VL-CT55 Series Specifications

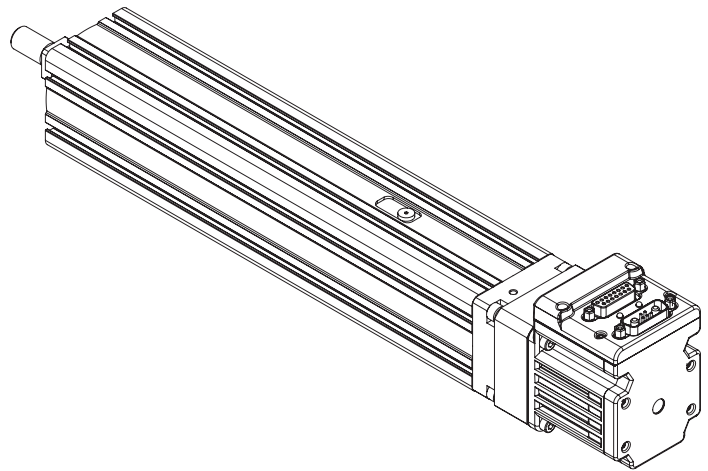
Parameter	Value	Units		
Configuration & Physical Parameters				
Motor	Animatics SmartMotors NEMA 23	-		
Coupling	Beam	-		
Ball Screw Leads	12	mm/rev		
Position Sensors	consult factory	-		
Stroke Lengths	50 - 300mm in 50mm steps	mm		
Overall Length	Stroke + 274.9	mm		
Over-Travel	0	mm		
Unit Mass	$1.94 + (\text{stroke, mm}) * 0.0075$	kg		
Performance				
Unidirectional Repeatability	20	µm		
Bi-directional Reapeatability	40	µm		
Accuracy	0.021/300	mm/ mm		
Max Velocity	470 -1000 (stroke dependant)	mm/s		
Max Acceration	0.3	G		
Payload Mass	22	kg		
Rated Velocity	400	mm/s		
Lifetime*	15000	hr		
Load Capacities, Dynamic				
Using SM2316DT-PLS2 motor	Direct Drive	2:1 pulley**	3:1 pulley**	-
Max Continuous Thrust	262	490	737	N
Max Peak Thrust	394	788	1182	N

* Based on operating at an average speed of the rated velocity at the given payload. The Lifetime will be significantly reduced operating above the Rated Velocity and/or given payload.

**Please see pages 22-23 for pulley offset CAD drawings.

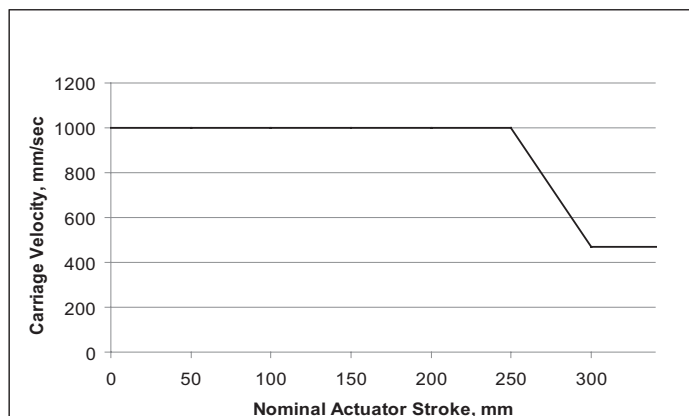


VL-CT55 series - Direct Drive

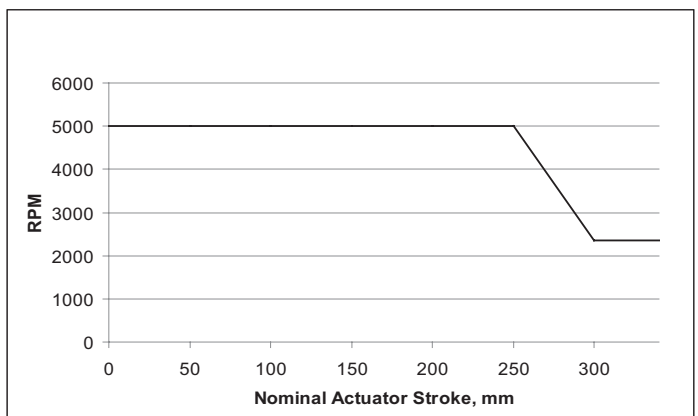


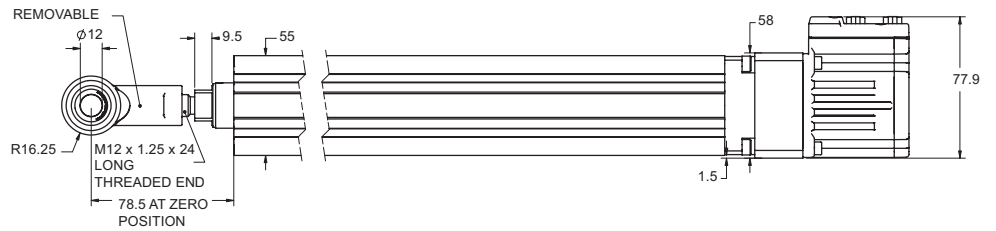
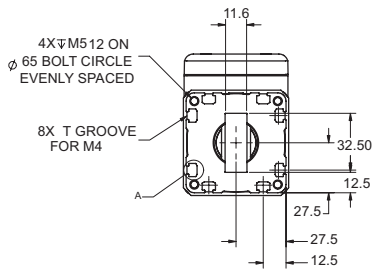
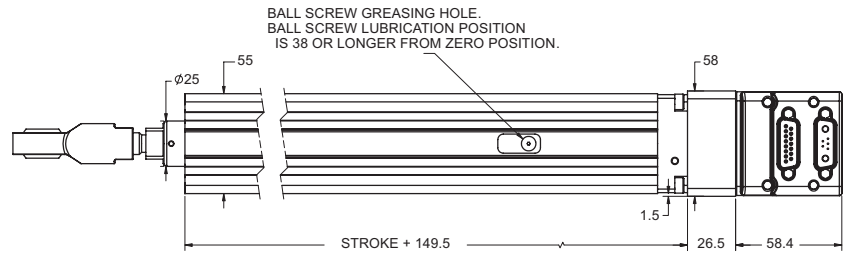
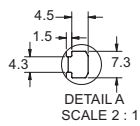
WARNING: Do not exceed these limits

VL-CT series - Maximum Permissible Carriage Velocity



VL-CT series - Maximum Permissible Screw Speed





Dimensions in millimeters

Note: For part numbers please refer to our Website at www.oemdynamics.com/partnumbers or to catalog page 5.

Thrust Curve performance data in following section on pages 50-55.